



Walcoom Corporation



BUILDING CONSTRUCTION

www.walcoom.com
E-mail: sales@walcoom.com

"New generation building construction technology make the world more wonderful."

As a comprehensive industrial company, Walcoom has a professional team to deeply study the new technology of building construction. Our quality and specialty construction tool systems have been widely used for residential community, industrial buildings, public buildings, basic public works and so on. Hope you can find constructive advice of building construction here.



perimeter protection screen is a movable safety screen of self climbing scaffolding system for building construction. Compared with traditional scaffold netting, it's light weight yet high strength. This greatly improve the safety of construction. Usually use perforated metal as its raw material has greatly reduced the waste and cost saving.

Feature and benefit

- **Safer**
 - Metal material, high impact-resistance.
 - Perimeter installation on scaffolding, full protection.
 - Construction is not affected by bad weather.
 - Good ventilation, fireproof.
 - Pre-assembly, avoid high-place disassembly and assembly operations.
- **Simple & faster**
 - Modular design, easy to install.
 - One-time overall assembly, efficient operation.
 - Flexibility, the ability to relocation the protection screen even while the scaffolding is still in place available.
 - Attached to the self climbing scaffolding system, easy to move with hydraulic lifting equipment.
- **Save**
 - Optimized cycle times, low average cost.
 - Environmental protection, recyclable.
 - Anti-corrosion, long service life.

Specification

- **Name:** Climbing screen, perimeter protection screen, scaffold safety screen, movable building construction protection screen, self climbing movable safety screen system.
- **Material:** Mild carbon steel, stainless steel, aluminum, galvanized plate.
- **Thickness of material:** 0.5–1.2 mm.
- **Size:** 1 m × 2 m, 1.25 m × 2.4 m, 1.5 m × 2.4 m, or customized on demand.
- **Hole shape:** Round (normal), slotted, square, triangle, etc.
- **Surface treatment:** Electric galvanized, hot dipped galvanized, electrostatic spray.
- **Frame material:** Galvanized square pipe.
- **Frame type:** Asterisk type structure, k type structure, cross type structure, etc.
- **Color:** Blue, green, yellow, silver, or customized on demand.
- **Package:** Standard pallet with waterproof film, or according to your requirement.
- **Prop material:** Q235, Q345 steel.
- **Frame type:** Asterisk type structure, k type structure, cross type structure, etc.
- **Color:** Blue, green, yellow, silver, or customized on demand.
- **Package:** Standard pallet with waterproof film, or according to your requirement.

Steel scaffold plank is popular because of its high bearing capacity and low weight, fireproof and slip resistant surface. It has a wide range of applications, in addition to the construction industry, it is also used in petroleum extraction, electrical system and shipyard. Steel scaffold plank provide a safe working platform for workers.



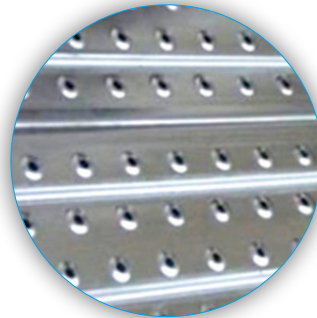
Feature

- High bearing capacity and low weight, anti-corrosion.
- Anti-deposited sand, fireproof.
- Slip resistant surface.
- Foolproof, weather resistance.
- Safe and neat construction.
- Environmental protection.
- Easy to assemble & dismantle, reusable, cost saving.

Benefit



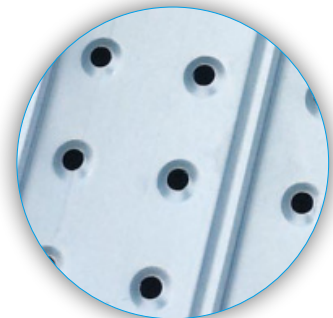
Hot dipped galvanized, fireproof, anti-corrosion.



Reinforcement design with groove, high bearing capacity and solve the problem of board drainage, weather resistance.



Flat support, square support, trapezoidal support, increasing the planks support in turn.



Punching design to ensure that the foot station to any position can step on 3–4 holes. slip resistant surface also reduce the scaffold self-weight load.



Side box design, to enhance the load capacity and deformation resistance.

Application

- Building construction.
- Petroleum work platform.
- Electricity work platform.
- Shipyard.

BUILDING CONSTRUCTION



Building construction



Petroleum work platform



Electricity work platform



Shipyard

Excavation edge protection

In the construction of personal injury is always a problem that must be valued. Excavation edge protection must be proper planning, management, supervision and implementation to prevent falling objects from height into excavations. It is a temporary steel frame edge protection which use brightly painted baulks or barriers where necessary. The purpose is to provide maximum protection of construction safety.



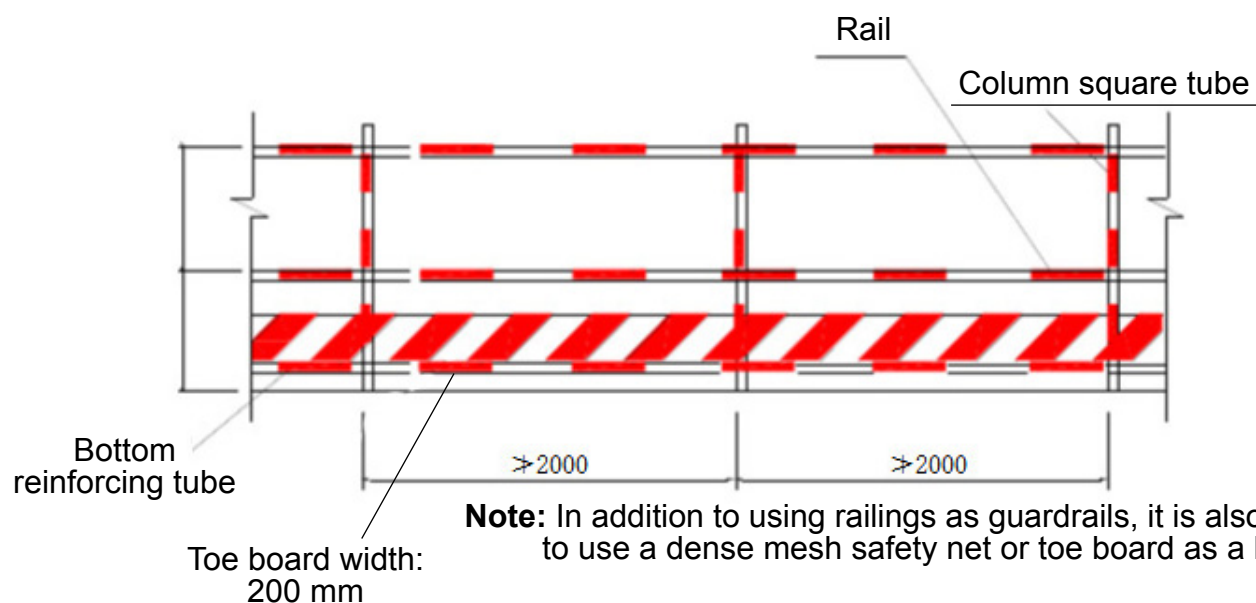
Feature

- Seamless welding, heat-resistant.
- High strength, achieve the purpose of security.
- Wear resistant, anti-corrosion.
- Warning, preventing, dividing.
- Easy to install and remove, durable.
- Attractive appearance, reusable, cost saving.

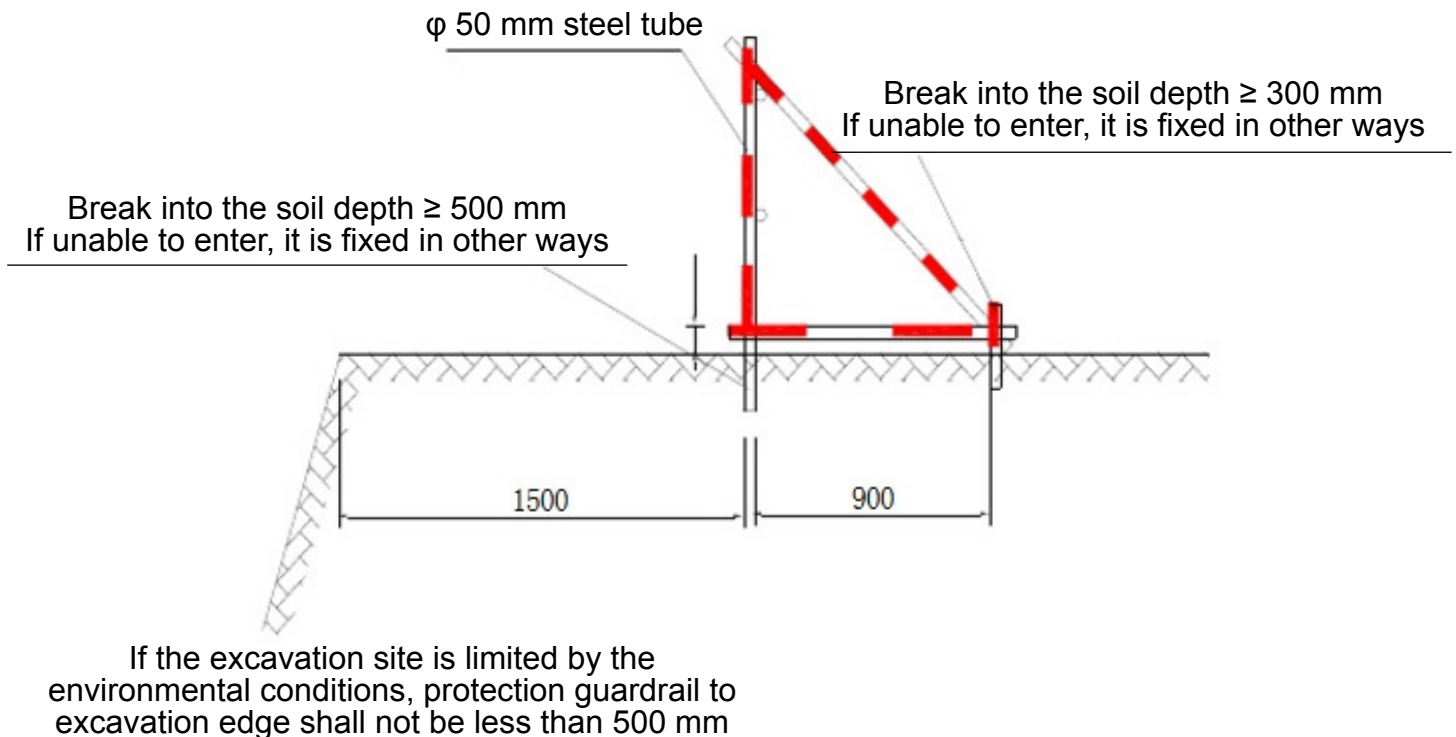
Specification

- **Material:** Q235 steel square tube, expanded metal, wire mesh, iron plate.
- **Process:** Welding.
- **Surface treatment:** Plastic dipping, spray, galvanized, painting, screen printing.
- **Color:** Yellow and black, red and white, or customized on demand.
- **Type**
 - **Excavation guardrail**
 - **Column steel square tube:** 50 mm × 50 mm.
Thickness: 1.7–2.0 mm.
 - **Horizontal steel square tube:** 30 mm × 30 mm.
Thickness: 1.7–2.0 mm.
 - **Iron plate width:** 200 mm.
Thickness: 0.8 mm.
 - **Excavation edge protection fence**
 - **Column steel square tube:** 40 mm × 40 mm.
 - **Horizontal steel square tube:** 30 mm × 30 mm.
 - **Mesh:** 25 mm × 25 mm.
 - **Wire diameter:** 0.4 mm.
 - **Expanded metal thickness:** 0.5 mm.
 - **iron plate width:** 200 mm.
- **Package:** Standard pallet with waterproof film, or according to your requirement.

Front view of excavation edge protection



Front view of excavation edge protection



Related design and installation standards of the excavation edge protection

- Safety guardrail must be protected at the edge of excavation construction according to the regulations. When the depth of excavation is more than 2 m, preferably edge protection with dense mesh enclosure installation.
- Excavation edge protection shall consist of top and mid the two rails and column square tube.
- Top rail to ground height shall be 1.0–1.2 m, mid rail to ground height shall be 0.5–0.6 m. Column square tube spacing should not be greater than 2.0 m.
- The mid rail should be added when the protection guardrail height is greater than 1.2 m. Rail spacing should not be greater than 0.6 m.
- The toe board height should not be less than 180 mm.
- Excavation protection surface should be sprayed with yellow and black (red and white) to show warning.
- Protection guardrail to excavation edge shall not be less than 500 mm. Preferably spacing is 1.5 m.
- The steel square tube can be used directly into the ground level 0.5–0.7 m depth.
- Column square tube fixed and its connection with the top and mid rails, the overall structure and strength shall withstand the external force of 1 kN in any direction. If there is possible collision of vehicle or objects, rail section should be increased or encryption railing column spacing and the embedding depth should be taken.

BUILDING CONSTRUCTION

Walcoom Corporation



Add: No. 3481, Yongxing Road, Hengshui City, Hebei Province, China.

Tel: +86-15030811699

Skype: wiremesh@live.com

E-mail: sales@walcoom.com

Web: <http://www.walcoom.com>

