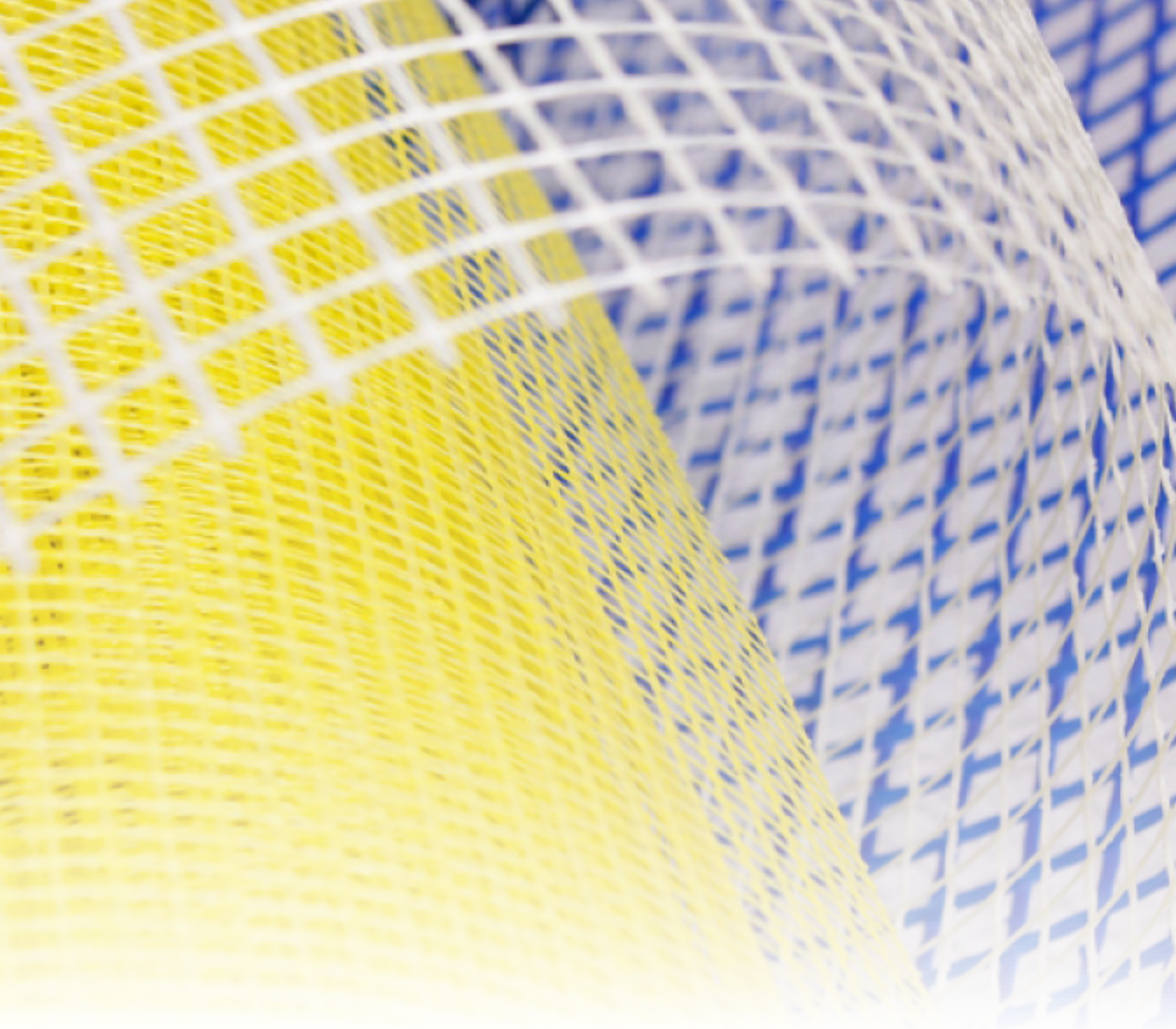




Walcoom Corporation



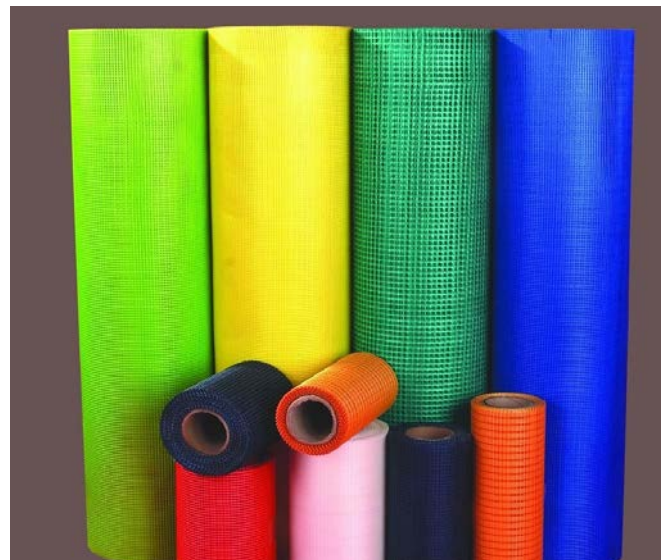
# FIBERGLASS MESH

[www.walcoom.com](http://www.walcoom.com)  
E-mail: [sales@walcoom.com](mailto:sales@walcoom.com)

## "Walcoom produce fiberglass mesh with strict standards to meet your high requirements."

Since its establishment 20 years ago, walcoom constantly innovate and improve the raw materials and production process of fiberglass mesh. Professional production engineers, skilled workers, considerate sales and after-sales service teams are fundamental to our development. We keep high standards and provide the best products for customers from all over the world.

**Fiberglass mesh** is based C/E-glass yarn as raw material, then coated by alkaline resistant latex. Featured by high strength and low weight, alkali resistant, good insulation properties and dimensional stability, etc. It is widely used for wall reinforced material, internal wall plaster work, EIFS system, wall defects repair work and so on.



### Feature

- High strength and low weight, high tensility.
- Alkali resistant, acid resistant, waterproof.
- Good insulation properties, good dimensional stability.
- Good impact resistance and not easy to be teared.
- Thermal preservation, fireproof, soundproof.
- Durable and long service life.

## Specification

- **Material:** C/E glass fiberglass yarn, modified acrylate copolymer glue.
- **Mesh size:** 4 × 4, 5 × 5, 7 × 7, 8 × 8, up to 12 × 12 mm.
- **Plastic coated layer:**  $\geq 20 \text{ g/m}^2$ .
- **ZrO<sub>2</sub>**
  - **Normal:** (14.5±0.8)%.
  - **GRC reinforced fiberglass mesh:** 16.5%.
- **TiO<sub>2</sub>:** (6±0.5)%.
- **Strength retention rate:**  $\geq 90\%$ .
- **Width**
  - **Plaster fiberglass mesh:** 0.9, 1, 1.1, 1.2, 1.75 m.
  - **Fiberglass mesh:** 5, 10, 15, 20 cm.
  - **GRC reinforced fiberglass mesh:** 0.6 m, 0.9 m, 1.0 m.
- **Roll length:** 20–500 m.
- **Weight**
  - **Normal:** 30, 45, 75, 145, up to 500 g/m<sup>2</sup>.
  - **For EIFS:**  $\geq 160 \text{ g/m}^2$ .
- **Color:** white (normal), orange, blue, green, any colors available.
- **Package:** First plastic film, then carton box or according to your requirement.

## Raw material



Fiberglass yarn



Treated C/E-glass fiber yarn



Fiberglass yarn roll

## Application

- Fiberglass mesh for construction wall insulation.
- Fiberglass mesh for plastering work.
- Fiberglass mesh for GRC reinforcement.
- Fiberglass mesh tape for prevent cracking in wall and ceiling.
- Fiberglass mesh for roof waterproofing.
- Fiberglass mesh for reinforce cement, plastic, bitumen, plaster, marble, mosaic and other building materials.
- Fiberglass mesh for grinding wheel base fabric.



## Category

The following focuses on the plaster fiberglass mesh, fiberglass mesh tape, GRC reinforced fiberglass mesh.

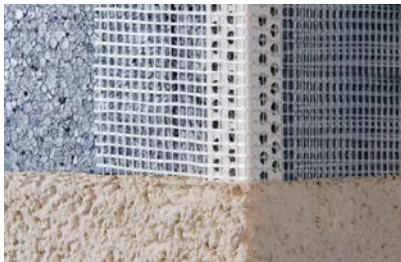
**Plaster fiberglass mesh** as one of the main uses of fiberglass mesh, it plays an important role in building plaster and heat preservation. With inexpensive, anti-alkali, corrosion-resistant, service life can be comparable with the building, plaster fiberglass mesh has successfully replaced the metal mesh in plastering work.



## Application

- Used in EIFS (exterior insulation and finish systems).
- Plastering work on walls and ceilings.

**Note:** Precoating should be done before using fiberglass mesh in EIFS, lap width of two fiberglass mesh sheets should be more than 50 mm.



fiberglass mesh for EIFS



Fiberglass mesh for plastering work



**Fiberglass mesh tape** is custom cut from high quality fiberglass mesh, coated with alkali-resistant coating and self-adhesive. Due to the chemical stability of glass fiber and not easily oxidized, fiberglass mesh tape is the best choice for drywall repair, plasterboard joints and all kinds of wall defects.

## Application

- Drywall repair work.
- Joint compound to reinforce plasterboard.
- Finishing the seams of walls and windows.



Finishing the seams of walls and windows.



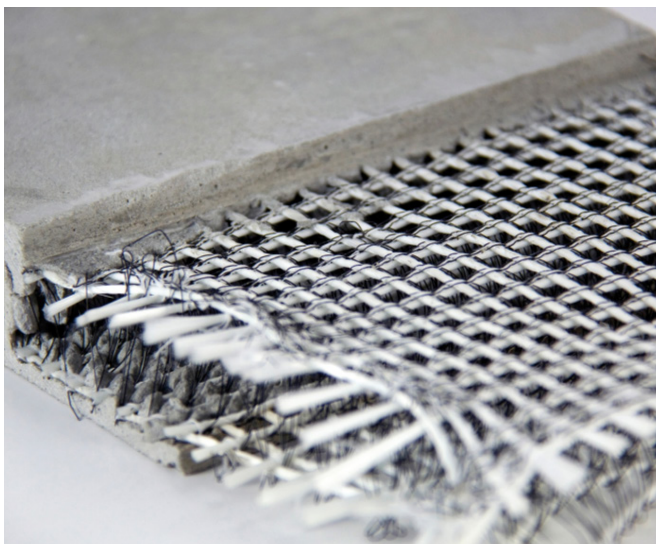
Joint compound to reinforce plasterboard



Drywall repair work

## Fiberglass mesh tape construction step

1. Keep walls clean and dry.
2. Put the fiberglass mesh tape on the crack and squeeze it.
3. Make sure the gap has been covered with tape and then cut off the extra tape and end with a mortar.
4. Let it dry, then lightly polished.
5. Fill in enough paint, make the surface smooth.
6. Removal of exposed tape. If all the cracks have been properly repaired, use fine composite material to repair the seams edge to make it shiny and clean.



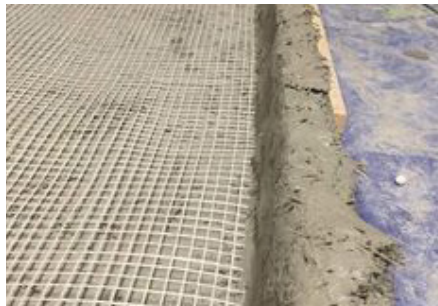
**GRC reinforced fiberglass mesh** is the best reinforcing material for cement concrete products, GRC wall panels and GRC components. Featured by high strength, tensility, flexibility and good alkali resistant, acid resistant. It can make up for the defect of steel concrete, to make some complicated GRC products and components can be present perfectly.

# FIBERGLASS MESH

In addition to the above points, fiberglass mesh is also used elsewhere. For example:  
roof waterproofing.  
Reinforce cement.  
Reinforce plastic.  
Reinforce bitumen.  
Reinforce marble.  
Reinforce mosaic.  
grinding wheel base fabric.  
and other building materials.



Roof waterproofing



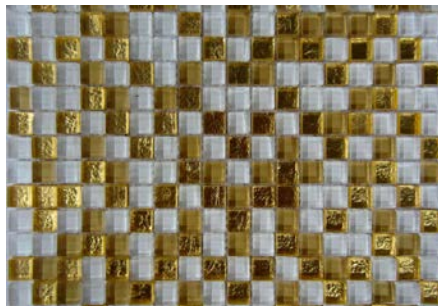
Reinforce cement



Reinforce bitumen



Reinforce marble



Reinforce mosaic



grinding wheel base fabric.



leno woven



acrylate copolymer glue



finished fiberglass mesh



# FIBERGLASS MESH

Walcoom Corporation



Add: No. 3481, Yongxing Road, Hengshui City, Hebei Province, China.  
Tel: +86-15030811699  
Skype: wiremesh@live.com  
E-mail: sales@walcoom.com  
Web: <http://www.walcoom.com>

