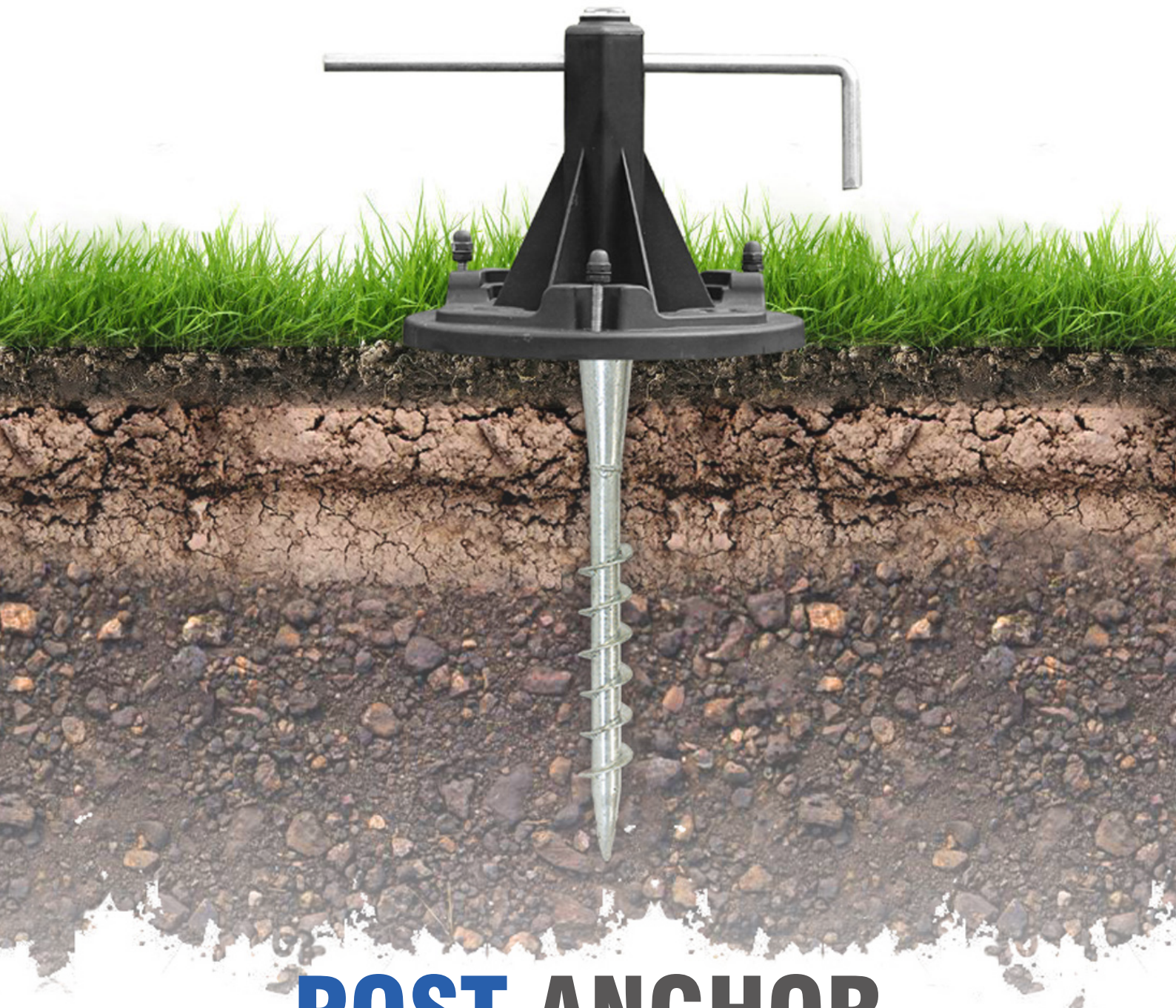




# WALCOOM

Walcoom Corporation







## POST ANCHOR

[www.walcoom.com](http://www.walcoom.com)  
E-mail: [sales@walcoom.com](mailto:sales@walcoom.com)

Walcoom is a corporate that specialized in producing and selling various wire mesh and relative accessories. The production base of Walcoom Corp. is located in Anping county, Hebei province, China, a hometown of wire mesh. Anping wire mesh can date back to Ming Dynasty, which has more than 500 years history. Combine 25 years of experience with modern building code and aesthetic, Walcoom provides a variety of high-quality products. At present, our company have a good trade relationship with companies of Kazakhstan and developed countries of Europe.

Here, Walcoom provides you five type of post anchor which can help you fix or strengthen objects. These products are post spike, post support, post base, ground screw and ground anchor.

## Product info

Name	Post spike	Post base	Ground screw	Ground anchor
product				
Material	steel	steel	iron, steel	steel, stainless steel
Surface treatment	powder coated galvanized, color paint	hot dip galvanized, color paint	hot dipped /electric galvanized, powder coated	hot-dip galvanized, color paint
Color	silver, red, black, green, blue, etc.	silver, black, etc.	white, silver, black, red, etc.	red, yellow, pink, black, green, etc
Package	Packed in steel pallet or in carton			

## I, Post Spike

### Feature

- Sharp.
- Multi-color and shape.
- Suit for soft soil.
- Easy for operation.
- No digging.
- Rust resistance.

### Application

- Fence.
- Mailbox.
- Flag.
- Playground.

## II, Post Support

### Feature

- Suit for fix wood column or other objects to concrete slab.
- Long-term protection.
- Light.
- Requires digging.
- Anti-fracture.
- Enhance the stability of the post.

### Application

- Fence.
- Traffic sign.
- Wood shad.
- Wood gate.

## III, Post Base

### Feature

- Allow accept fixings such as concrete bases, timber decking or walls.
- Capable of reinforcing or loosening posts.
- Multi-shape and color.
- Anti-corrosion.
- Long life.
- Durability.

### Application

- Fencing.
- Traffic sign.
- Gate.
- Flag pole.
- Timber construction.

## IV, Ground Screw

### Feature

- Tent.
- Barrier.
- Shelter.
- Traffic sign.
- Billboard.
- Fence.
- Solar power system.
- Shad.
- Flag pole.

### Application

- Timber construction.
- Solar powder systems.
- Road and traffic.
- Fencing system.
- Sheds and containers.
- Garden and leisure.
- Flag poles and marks.
- Sun umbrella.

## V, Ground Anchor

### Feature

- No dig.
- Long-term or short-term use.
- Corrosion resistance.
- Durable.
- Reusable.
- Easy for install and remove.

### Application

- Tent.
- Boat.
- Awing.
- Gazebo.
- Marquee.



The shape of product for you to choose.

## Post spike



Two-fin post spike



Black four-fin post spike with hollow square head.  
Length: 3.5"; width: 3.5"; height: 10.3".



Three-fin post spike



Four-fin post spike



Needle-shape hollow post pike, the holes allow stick to pass through.  
Length: 1.4"; width: 1.4"; height: 1.7".

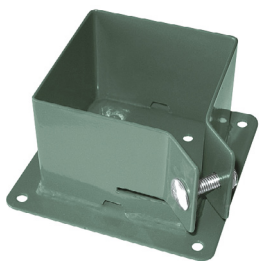


Four-fin black post spike, and its head is hollow that can hold various small posts.  
Length: 16"; width: 4"; height: 4".



Untreated four-fin post spike with hollow square head.  
Length: 34"; width: 4"; height: 4".

## Post base



Adjustable ground base



Unadjustable post base

## Ground screw



Ground screw with handle



Ground screw without handle

## Ground anchor



Animal spiral ground anchor



Steel eye earth anchor



Heavy-duty ground anchor

## Warnings

**First**, post spike, ground screw, ground anchor are suit for used in sand or loose soil instead of rocks or concrete surface. These products, wood floor, ceramic tile and concrete slab would damage if you punch these products into the hard concrete slab or ceramic tile or wood floor.

**Second**, some products are required to install by hands, for example animal spiral ground anchor, it is slightly light and special appearance, so you should not punch it into the ground with hammer, screw it into the ground instead, or it would out of shape.

**Third**, post support and post base are usually used in timber construction, they are often used along with screws and nuts. Post support used in the bounding place for two or more posts, so that it reinforce the connection between two posts.



# POST ANCHOR

Walcoom Corporation



Add: No. 3481, Yongxing Road, Hengshui City, Hebei Province, China.  
Tel: +86-15030811699  
Skype: wiremesh@live.com  
E-mail: sales@walcoom.com  
Web: <http://www.walcoom.com>

