



Walcoom Corporation



STEEL BAR GRATING

www.walcoom.com
E-mail: sales@walcoom.com

Product introduction



Steel grating with good ventilation, perfect lighting performance, high load capacity and resistance to deformation is made of carbon steel, aluminum alloy steel or stainless steel.

Steel grating is popular with industrial and commercial areas and is widely used as stair tread, walkway, drainage trench cover, sun shade panel, observation tower, bridge deck, and various platforms for temporary or permanent applications in daily life.

Walcoom corporation has many years' experience in the production of various steel gratings, and won a large number of foreign customers' affirmation. And our company has been devoting commitment to technology innovation, new product development, research in product development. The many years' achievements of effort promote Walcoom today in the professional field of steel grating market.

Technical Demands and Installation of Steel Grating

Walcoom Corporation Offers You Best Steel Gratings

Overview of our company

Since its foundation, Walcoom Corporation has been providing professional steel bar gratings for our customers from various areas of life. By now, our company has already built long-term and reliable cooperations with many customers from North America, Western Europe, Mid-east, Africa, and many other places. Equipped with advanced equipment, skilled workers, international qualified certifications and so many other elements, we can supply not only the simple steel grating bar grating panels, but also the most completed products for you. All types of products have their own characteristics and can be supplied in various applications.

About our products

Steel bar grating with high strength and firm structure is made up of carbon steel, aluminum steel or stainless steel. According to the manufacturing methods, it can be divided into four types: welded bar grating, press lock grating, swage locked grating and riveted grating. According to the surface shapes, it can be divided into smooth and serrated gratings.



With various styles and sizes for choice, steel gratings are widely used in everyday life, such as stair treads, walkways, platforms, floors, various covers, wheeled equipment, security screens, heavy duty constructions and so on.

features

- High strength and firm structure.
- High load capacity and resistance to deformation.
- Various styles and sizes for choice.
- Good ventilation.
- Perfect lighting performance.
- Good heat dissipation.
- Perfect lighting performance.

- Good heat dissipation.
- Slid resistance.
- Explosion proof.
- Alkali and acid resistance.
- Harsh environment resistance.
- Corrosion and rust resistance.
- Easy installation.
- Durable and long service life.

Compared with other steel gratings, our product has following main advantages

- **Different materials for choice**

Steel bar grating can be made of different materials including carbon steel, aluminum steel and stainless steel. Carbon steel grating is the most economical type with galvanized and painted surface treatment. The aluminum steel grating features lightweight and outstanding corrosion resistance while the stainless steel grating has outstanding chemical stability to be used in harshest environments.

- **Various fabrication methods**

Steel grating can be classified into different types according to the fabrication. The cross bars are jointed to the bearing bars through welding, pressure locked swage locked dand rivets connections. The main types are including welded bar grating, press lock grating, swage locked grating and riveted grating.

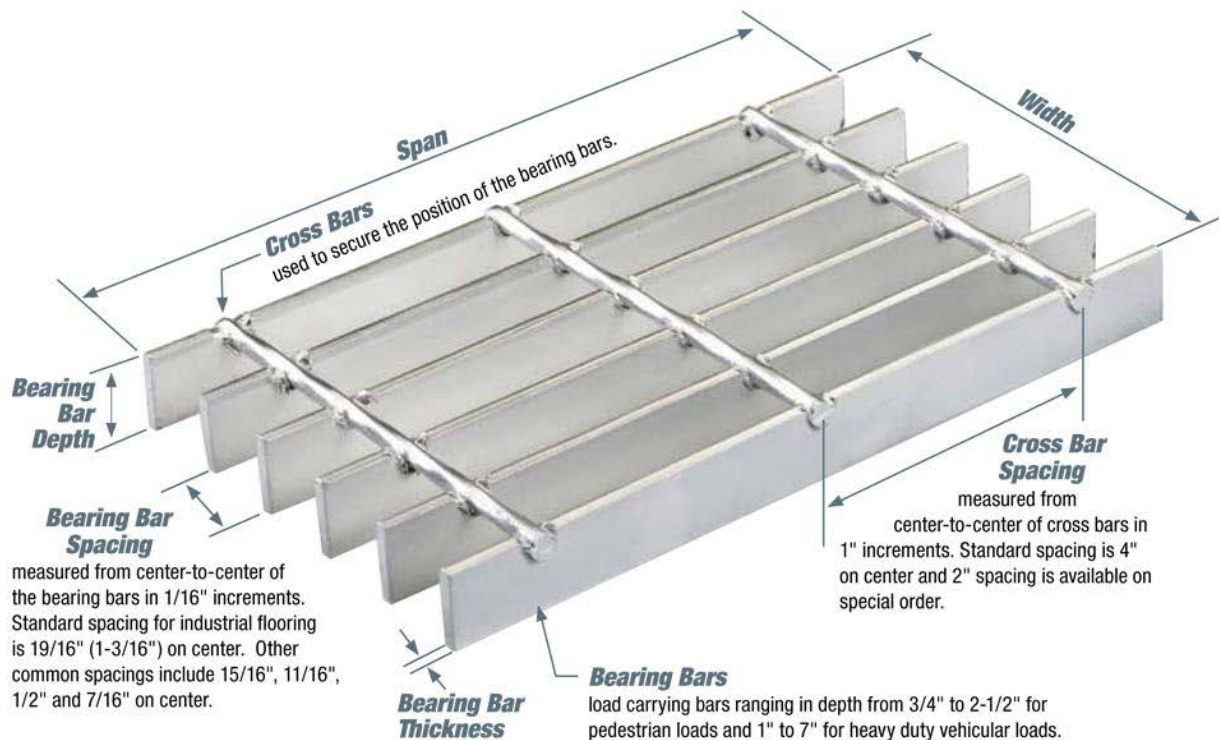
- **High load capacity**

The solid and firm structure makes steel grating have high load carrying capacity. Especially the swage locked grating and press-locked grating, which can supply the excellent lateral stiffness to the steel grating. The heavy duty steel grating can not only available for pedestrians walking, but also permit the heavy duty vehicles safely passing through.

- **Humanization design**

Compared with the standard steel grating, which has a large bearing bar spacing, there are several types of close mesh gratings with closer bearing bar spacing for pedestrians wearing high-heel shoes easy passing. The riveted steel grating is available for vehicles equipment, such as wheelchairs, roller skates and other vehicles passing through. And there is a type of steel grating has serrated surface and has excellent slip resistance performance. Serrated steel grating is widely used in the places filled with waters, oil and other elements may cause slip accident. It can secure the safe access of pedestrians and vehicles. Additional, it can prevent the workers working on the platform from slipping down.

STEEL BAR GRATING

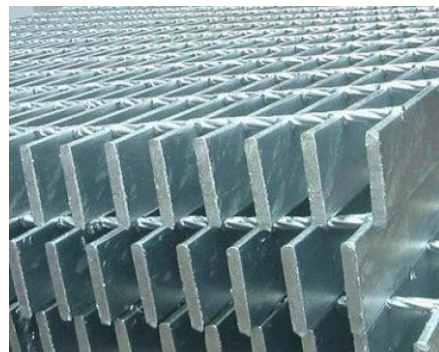


Common specification

- **Material:** carbon steel, aluminum steel, stainless steel.
- **Surface treatment:** galvanized, mill finished, painted, powder coated, PVC coated.



Cold galvanized



Hot galvanized

- **Surface type:** standard plain surface, serrated surface.
- **Common bearing bar spacing:** 7/16", 1/2", 11/16", 15/16", 19/16" in 1/16" increments.
- **Common cross bar spacing:** 2", 4" in 1" increment.
- **Bearing bar depth:** 3/4" to 7".
- **Bearing bar thickness:** 1/8" to 1/2".
- **Steel grating shape:** square, rectangular, round, half round, hollow circle, special shapes.

STEEL BAR GRATING



Square grating



Rectangular grating



Round grating



Hollow circle grating



Special shape grating

• Packaging methods

- **Strap packaging:** generally applicable to relatively neat steel grating.
- **Pallet packaging:** generally for export packing.
- **Screw rod fixation:** Four screw rods through aperture for screw-locked packaging.



Strap packaging



Pallet packaging



Screw rod fixation

Applications

- Stair tread.
- Stair handrail.
- Walkway.
- Operating platform.

STEEL BAR GRATING

- Drilling platform.
- Catwalk stage.
- Floor.
- Showcase ground.
- Ceiling.
- Window.
- Sun visor.
- Fountain panel.
- Steel grating ramp.
- Lifting track.
- Tree cover.
- Well cover.
- Drainage trench cover.
- Industrial truck.
- Bridge construction.
- Decorative wall.
- Security fence.
- Transformer reservoir.
- Chair.
- Shelf rack.
- Steel grating stand.
- Observation tower.
- Baby carriage.
- Substation fire pit.
- Clean area panel.
- Split obstacle or screen.
- Food panel.
- Ventilated building facades



Different classification criteria

- **According to different materials**
 - Stainless steel bar
 - Aluminum grating
 - Carbon steel grating

STEEL BAR GRATING

- **According to different surface types**

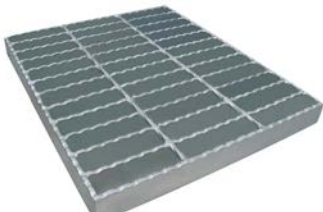
- Smooth grating
- Serrated grating

- **According to different manufacture methods**

- Welded bar grating
- Press lock grating
- Swage locked grating
- Riveted grating

- **According to different applications**

- Stair tread grating
- Walkway grating
- Platform grating
- Sun visor grating
- Security grating
- Heavy duty grating
- And so on.



Welded bar grating



Press lock grating



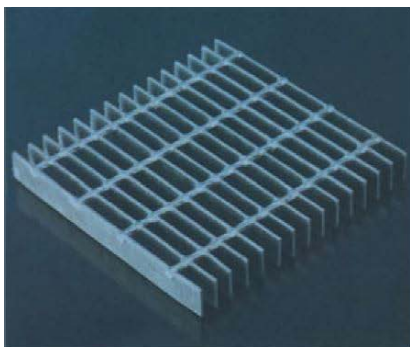
Swage locked grating



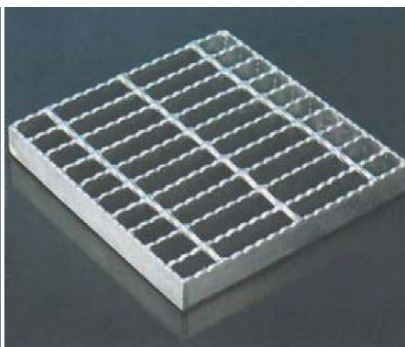
Riveted grating

Welded bar grating

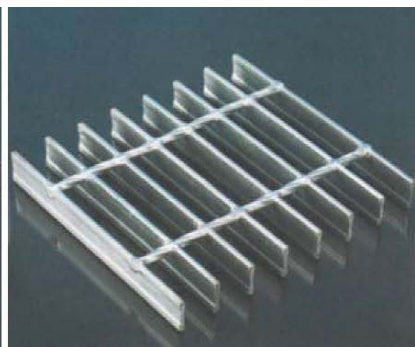
Welded bar grating is also called metal open bar grating. It can be made of various materials, such as carbon steel, aluminum steel or stainless steel. The bearing bars and cross bars are welded under high heat and pressure to form a permanent joint. And there are two types of the steel bar grating: smooth and serrated steel bar gratings. Smooth surface steel bar grating, also called plain steel bar grating, is more popular than the serrated surface steel bar grating. But the serrated steel grating have better skid resistant property than the smooth surface steel bar grating.



(Plain)



(Serrated)



(I-shape)

Specification

- **Material:** carbon steel and stainless steel.
- **Surface treatment:** galvanized, mill finished, painted, powder coated, etc.
- **Surface type:** standard plain surface, serrated surface.
- **Bearing bar type:** plain bearing bar and serrated bearing bar.
- **Standard width:** 2', 3' and 4'.

Table 1: Specifications of W-19 Welded Steel Grating

Item	Bar Size (D × W)	Bearing Bar Spacing	Cross Bar Spacing
RSGW19-01	3/4" × 1/8"	1-3/16"	4"
RSGW19-02	1" × 1/8"	1-3/16"	2", 4"
RSGW19-03	1-1/4" × 1/8"	1-3/16"	2", 4"
RSGW19-04	1-1/2" × 1/8"	1-3/16"	2", 4"
RSGW19-05	3/4" × 3/16"	1-3/16"	2", 4"
RSGW19-06	1" × 3/16"	1-3/16"	2", 4"
RSGW19-07	1-1/4" × 3/16"	1-3/16"	2", 4"
RSGW19-08	1-1/2" × 3/16"	1-3/16"	2", 4"
RSGW19-09	1-3/4" × 3/16"	1-3/16"	2", 4"
RSGW19-10	2" × 3/16"	1-3/16"	2", 4"
RSGW19-11	2-1/4" × 3/16"	1-3/16"	2", 4"
RSGW19-12	2-1/2" × 3/16"	1-3/16"	2", 4"

Table 2: Specifications of W-15 Welded Steel Grating

Item	Bar Size (D × W)	Bearing Bar Spacing	Cross Bar Spacing
RSGW15-01	3/4" × 1/8"	15/16"	4"
RSGW15-02	1" × 1/8"	15/16"	2", 4"
RSGW15-03	1-1/4" × 1/8"	15/16"	2", 4"
RSGW15-04	1-1/2" × 1/8"	15/16"	2", 4"
RSGW15-05	3/4" × 3/16"	15/16"	4"
RSGW15-06	1" × 3/16"	15/16"	2", 4"
RSGW15-07	1-1/4" × 3/16"	15/16"	2", 4"
RSGW15-08	1-1/2" × 3/16"	15/16"	2", 4"
RSGW15-09	1-3/4" × 3/16"	15/16"	2", 4"
RSGW15-10	2" × 3/16"	15/16"	2", 4"
RSGW15-11	2-1/4" × 3/16"	15/16"	2", 4"
RSGW15-12	2-1/2" × 3/16"	15/16"	2", 4"

Press lock grating

Press lock grating is also called pressed grating or pressure lock grating, which is made of low carbon steel, stainless steel or aluminum. The press-locked grating is constructed with two close-tolerance slotted bars bonded together by tremendous hydraulic pressure. And this production can let press-locked grating be a permanent locking. With high strength and firm structure, it's widely used in industrial factories or parks, commercial buildings, municipal engineering as stair treads, platforms, walkways, security screens, tree covers, trench covers, drainage covers and so on. Serrated surface is also available for anti-slide effect.



Press lock grating used as security building screen

Specification

- **Material:** low carbon steel, stainless steel and aluminum.
- **Surface treatment:** galvanized, painted and powder coated.
- **Surface type:** standard plain surface, serrated surface.
- **Cross bar spacing:** 2" or 4".
- **Bearing bar spacing:** standard is 15/16" or 1-3/16".
- **Classification**
 - **Full-locked steel bar grating**
The bearing bars and cross bars are notched and have the same height.
 - **Heavy-duty pressed bar grating**
The bearing bars are higher than the cross bars and they are all notched.
 - **Press-locked bar grating**
Only the bearing bars are notched, the cross bars are common plain steel. And they have different height.
 - **Louver bar grating**
The notches of bearing bars are at a angle of 30° or 45°. The cross bars insert into the bearing bars before being pressed.

STEEL BAR GRATING

Table 3: Specifications of P-19 Press-locked Steel Bar Grating

Item	Bar Size (D × W)	Bearing Bar Spacing	Cross Bar Spacing
PGW19-01	3/4" × 1/8"	1-3/16"	2", 4"
PGW19-02	1" × 1/8"	1-3/16"	2", 4"
PGW19-03	1-1/4" × 1/8"	1-3/16"	2", 4"
PGW19-04	1-1/2" × 1/8"	1-3/16"	2", 4"
PGW19-05	3/4" × 3/16"	1-3/16"	2", 4"
PGW19-06	1" × 3/16"	1-3/16"	2", 4"
PGW19-07	1-1/4" × 3/16"	1-3/16"	2", 4"
PGW19-08	1-1/2" × 3/16"	1-3/16"	2", 4"
PGW19-09	1-3/4" × 3/16"	1-3/16"	2", 4"
PGW19-10	2" × 3/16"	1-3/16"	2", 4"
PGW19-11	2-1/4" × 3/16"	1-3/16"	2", 4"
PGW19-12	2-1/2" × 3/16"	1-3/16"	2", 4"

Table 4: Specifications of P-15 Press-locked Steel Bar Grating

Item	Bar Size (D × W)	Bearing Bar Spacing	Cross Bar Spacing
PGW15-01	3/4" × 1/8"	15/16"	2", 4"
PGW15-02	1" × 1/8"	15/16"	2", 4"
PGW15-03	1-1/4" × 1/8"	15/16"	2", 4"
PGW15-04	1-1/2" × 1/8"	15/16"	2", 4"
PGW15-05	3/4" × 3/16"	15/16"	2", 4"
PGW15-06	1" × 3/16"	15/16"	2", 4"
PGW15-07	1-1/4" × 3/16"	15/16"	2", 4"
PGW15-08	1-1/2" × 3/16"	15/16"	2", 4"
PGW15-09	1-3/4" × 3/16"	15/16"	2", 4"
PGW15-10	2" × 3/16"	15/16"	2", 4"
PGW15-11	2-1/4" × 3/16"	15/16"	2", 4"
PGW15-12	2-1/2" × 3/16"	15/16"	2", 4"

Swage locked grating

Swage locked grating is also called aluminum grating, because it's mainly made of aluminum steel bars. Other materials can be stainless steel bars. The cross bars are inserted into pre-punched holes of bearing bars and then it is hydraulically swaged under tons of pressure to lock the bearing bars in place. There are three kinds of bearing bars: rectangular bars, T bars or I bars. I bar swage-locked grating is lighter and cheaper than the rectangular bars swage-locked grating, and is the most widely used type. And now the close mesh steel grating is also available of 7/16" to 11/16" bearing bar spacing for special uses.



Swage locked grating used as drainage cover in kitchen.



Dense mesh grating

Specification

- **Material:** aluminum alloy steel, carbon steel, stainless steel.
- **Surface type:** plain surface or serrated surface.
- **Surface treatment:** galvanized or mill finished.
- **Bearing bars type:** rectangular bars, T bars or I bars.
- **Bearing bar spacing:** standard is 15/16" or 1-3/16", 7/16" to 11/16" available.
- **Cross bar spacing:** 2" or 4".

Riveted grating

Riveted grating is also called riveted grating, which is a type of heavy duty grating with high strength and load capacity. The main parts of riveted grating are bearing bars, crimp bars and rivets, and the riveted grating has a series of crimp bars for various choices. It's widely used in the bridge constructions as heavy duty bridge grating and used as trench cover, drainage cover for convenient draining. Besides, serrated surface riveted grating can be used as the walkways for anti-slip effect.



Riveted grating used as bridge surface

Specification

- **Material:** carbon steel, stainless steel or aluminum steel.
- **Surface treatment:** galvanized, painted or mill finished.
- **Bearing bar spacing:** 3/4" or 1-1/8".
- **Cross bar spacing:** 3" or 7".
- **Surface type:** smooth surface or serrated surface.

Table 5: Specification Sheet of RG18 Riveted Grating

Item	Bearing Bar	Crimp Bar	Bearing Bar Spacing	Cross Bar Spacing
RG18-01	1" × 1/8"	3/4" × 1/8"	1-1/8"	3", 7"
RG18-02	1" × 3/16"	3/4" × 1/8"	1-1/8"	3", 7"
RG18-03	1-1/4" × 1/8"	3/4" × 1/8"	1-1/8"	3", 7"
RG18-04	1-1/4" × 3/16"	3/4" × 1/8"	1-1/8"	3", 7"
RG18-05	1-1/2" × 1/8"	1" × 1/8"	1-1/8"	3", 7"
RG18-06	1-1/2" × 3/16"	1" × 1/8"	1-1/8"	3", 7"
RG18-07	1-3/4" × 3/16"	1" × 1/8"	1-1/8"	3", 7"
RG18-08	2" × 3/16"	1" × 1/8"	1-1/8"	3", 7"
RG18-09	2-1/4" × 3/16"	1" × 1/8"	1-1/8"	3", 7"
RG18-10	2-1/2" × 3/16"	1" × 1/8"	1-1/8"	3", 7"

Table 6: Specification Sheet of RG12 Riveted Grating

Item	Bearing Bar	Crimp Bar	Bearing Bar Spacing	Cross Bar Spacing
RG12-01	1" × 1/8"	3/4" × 1/8"	3/4"	3", 7"
RG12-02	1" × 3/16"	3/4" × 1/8"	3/4"	3", 7"
RG12-03	1-1/4" × 1/8"	3/4" × 1/8"	3/4"	3", 7"
RG12-04	1-1/4" × 3/16"	3/4" × 1/8"	3/4"	3", 7"
RG12-05	1-1/2" × 1/8"	1" × 1/8"	3/4"	3", 7"
RG12-06	1-1/2" × 3/16"	1" × 1/8"	3/4"	3", 7"
RG12-07	1-3/4" × 3/16"	1" × 1/8"	3/4"	3", 7"
RG12-08	2" × 3/16"	1" × 1/8"	3/4"	3", 7"
RG12-09	2-1/4" × 3/16"	1" × 1/8"	3/4"	3", 7"
RG12-10	2-1/2" × 3/16"	1" × 1/8"	3/4"	3", 7"

Hot products

- Stainless steel bar.
- Aluminum grating.
- Heavy duty grating.
- Welded bar grating.
- Swage locked grating.
- Stair tread steel grating.
- Drainage trench cover grating.

The installation

• Demands

- Install the steel grating according to the steel structure, and the steel grating would not move horizontally and would not be out of the support frame.
- The support length on the edge of the steel grating should be more than 25 mm.
- Install the steel grating by welding and weld the steel grating on the frame if not need to move.
- Install the steel grating with fixing clips if need to move or tear down the steel grating after installation.
- The diameter of the spiral is more than 8 mm.
- The distance of the installation should be adjusted according to the tolerance. The smallest installation distance of the steel grating should be 3 mm and the smallest installation distance between the steel grating and the structure should be 10 mm.

• Fixing clips



A type clip

B type clip

C type clip

Steel grating fix clips

Table 7: The Fix Clips Number

The Steel Grating Size	0.5–1.5 m	1.5–3.0 m	3.0–4.0 m	4.0–5.0 m	5.0–6.0 m
The Fix Clips Number	4	6	8	10	12

- Install the fix clips on the frame of the four angles., and there should be 4 sets of fix clips every 1 m².
- Install the fix clips according to the table 7 if the steel grating is long and there is support frame in the middle.
- The fix clips consist of the upper clip, lower clip, bolt, nut and washer.
- Assemble the fix clips like the picture. The lower clip goes through the steel grating and the upper clip is installed on the bearing bar. The lower clip is putted on the support frame. Use the nut to fix a position for the lower clip groove. Tighten the bolt and the clips should be close to the frame. The tightening torque is 17–20 N·m.
- Tighten them When the steel grating is installed on the support frame. Make sure the steel grating would not move and cause safe problem.
- Maintain the steel grating after installation. Tighten the fix clips in time when the fix clips is loose.

Maximum tolerance

Table 8: Permissible Tolerance

Location	Tolerance (mm)
Length of Grating Panel or Individual Bearing Bar	+0/-5
Width of Grating	+0/-5
Depth of Bearing Bars	
Up to and Including 25 mm	+1/-0.5
Over 25 mm up to 50 mm	+1.5/-0.75
Over 50 mm up to 100 mm	+2/-1
Over 100 up to 150	+2/-1.5
Thickness of Bearing Bar	
Up to 10 mm	±0.4
Over 10 mm up to 15 mm	±0.5
Binding	
Top of Binding Bar above Bearing Bar	+4/-0
Underside of Binding Bar above Bottom of Bearing Bar	±0

Table 9: Manufacturing tolerance

Location	Tolerance (mm)
Difference between the Length of Diaonals	5 (out of squareness of grating panel)
Transverse Bars in Either Direction from Perpendicular Alignment with Bearing Bars	1:100
Transverse Bar Spacing	±5 per 1500 length of bearing bars
Bearing Bar Lean	1:10
Transverse Bow of Panel before Fastening to Supports	1:100
Longitudinal Bow of Panel before Fastening to Supports	1:200

Steel grating for stair treads

Types of steel grating stair treads



Welded fixing, banded ends without nosing.



Bolted fixing, holed end plates without nosing.



Welded fixing, banded ends with checker plate nosing.

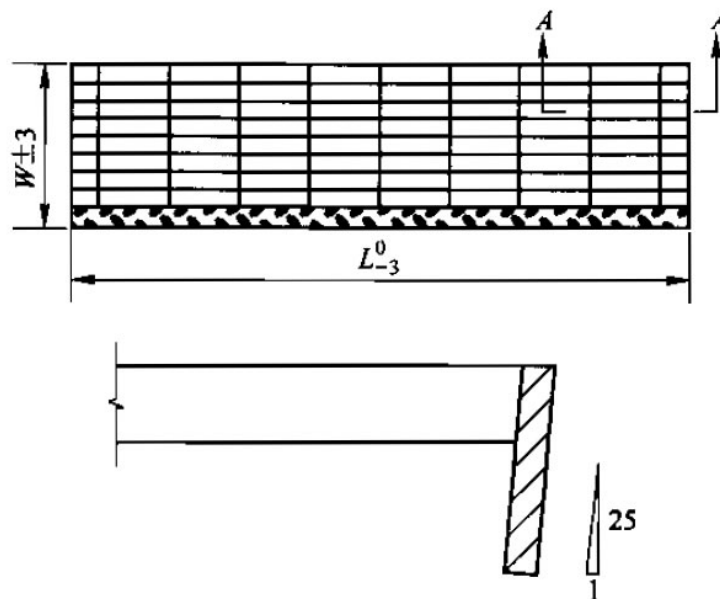


Bolted fixing, holed end plates with nosing.

Specifications of steel grating stair treads

- **Length**
 - **Common length:** 700, 800, 900 mm.
 - **Maximum length:** 1200 mm, suitable for several people passing at the same time in double direction or it is used as the escape line for workers.
 - **Minimum length:** 600 mm, suitable for single person passing.
- **Bearing bar pitch:** 20 mm, 30 mm or 40 mm.
- **Cross bar pitch:** 50 mm or 100 mm.
- **Nosing type:** checker plate, strip plate and hole plate.
- **Bearing load:** 1.5 kN.

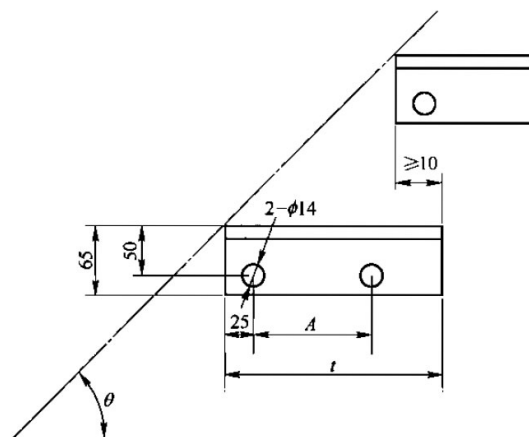
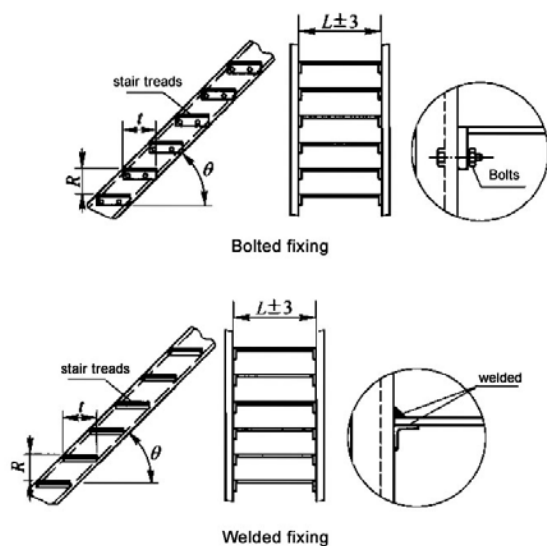
- **Deflection:** no larger than 1/500 of span.
- **Deflection testing method:**
 - **Span no larger than 1200 mm:** press 1.5 kN load at the 100 mm × 100 mm area.
 - **Span larger than 1200 mm:** press 1.5 kN at the symmetrical 600 mm position.
- **End plate size and hole size of bolted fixing grating:** refer to table 10.
- **Flat bar detailed specifications:** refer to table 11.
- **I bar detailed specifications:** refer to Table 12.
- **Press-locked steel grating specification:** refer to Table 13.
- **Tolerance of steel grating for stair treads**
 - **Length tolerance:** +0/-3 mm.
 - **Width tolerance:** ± 3 mm.
 - **Vertical tolerance.** Vertical tolerance angle is no larger than 25°.



Steel grating tolerance for stair treads

- **Connection of stair treads and ladder beam**
 - **Bolt connection:** it adopts thickening end plate for welding and pre-holed on the end plate and fixed by bolts and nuts. It is recycled for other applications or places.
 - **Welded connection:** it is difficult to uninstall but more economical and firmer than bolted connection

STEEL BAR GRATING



End plate size and hole pitch

Table 10: End Plate Size and Hole Size of Bolted Fixing Grating

End Plate Size (t)(mm)	125	155 – 185	215 – 245	≥ 275
Hole Pitch (A)(mm)	45	75	100	150

Table 11: Flat Bar Welded Steel Grating Stair Tread Specification

Item	Plate Width (mm)	Plate Thickness (mm)	Plate Pitch (mm)	Cross Bar Pitch (mm)
SGDF-01	65	5	20/30/40	50/100
SGDF-02	60	5	20/30/40	50/100
SGDF-03	55	5	20/30/40	50/100
SGDF-04	50	5	20/30/40	50/100
SGDF-05	50	3	20/30/40	50/100
SGDF-06	45	5	20/30/40	50/100
SGDF-07	40	5	20/30/40	50/100
SGDF-08	40	3	20/30/40	50/100
SGDF-09	35	5	20/30/40	50/100
SGDF-10	35	3	20/30/40	50/100
SGDF-11	32	5	20/30/40	50/100
SGDF-12	32	3	20/30/40	50/100
SGDF-13	25	5	20/30/40	50/100
SGDF-14	25	3	20/30/40	50/100
SGDF-15	20	5	20/30/40	50/100
SGDF-16	20	3	20/30/40	50/100

Table 12: I bar Welded Steel Grating Stair Tread Specification

Item	Plate Width (mm)	Plate Flange Thickness (mm)	Plate Middle Thickness (mm)	Plate Flange Width (mm)	Plate Pitch (mm)	Cross Bar Pitch (mm)
SGDI-01	75	7	4	12	30/40	50/100
SGDI-02	65	7	4	10	30/40	50/100
SGDI-03	60	7	4	10	30/40	50/100
SGDI-04	55	7	4	8.5	30/40	50/100
SGDI-05	50	7	4	8	30/40	50/100
SGDI-06	50	5	3	8.5	30/40	50/100
SGDI-07	44	5	3	8	30/40	50/100
SGDI-08	38	5	3	7	30/40	50/100
SGDI-09	32	5	3	6	30/40	50/100
SGDI-10	25	5	3	4.5	30/40	50/100

Table 13: Heavy Duty Press-Locked Steel Grating Stair Tread Specification

Item	Plate Width (mm)	Plate Thickness (mm)	Plate Pitch (mm)	Cross Bar Size (mm)	Cross Bar Pitch (mm)
SGDP-01	150	8	40	8 × 8	50/100
SGDP-02	130	8	40	8 × 8	50/100
SGDP-03	120	8	40	8 × 8	50/100
SGDP-04	100	8	40	8 × 8	50/100
SGDP-05	90	8	40	8 × 8	50/100
SGDP-06	80	8	40	8 × 8	50/100
SGDP-07	75	8	40	8 × 8	50/100
SGDP-08	75	6	30	8 × 8	50/100
SGDP-09	75	6	40	8 × 8	50/100
SGDP-10	70	6	30	8 × 8	50/100
SGDP-11	70	6	40	8 × 8	50/100

STEEL BAR GRATING



Indoor stair tread



Outdoor stair tread



Spiral stair tread

Steel grating for drainage trench box grates

The box grate includes several types with different accessory and structure, you can refer to it and find the perfect one. If you have any other drawings, we can customize as your requirement.



Drainage trench box grates without hinge connection.



Drainage trench box grate with handles.



Hinged drainage trench box grate with cross bar.



Drainage trench box grate with supporting bars.

Table 14: Specifications of Box Grate

Item	Clear Opening (mm)	Grate Size (mm)	Grate Depth (mm)	Frame Size (mm)
BG-01	250 × 250	300 × 300	25	30 × 30 × 3
BG-02	300 × 300	350 × 350	25	30 × 30 × 5
BG-03	300 × 300	365 × 365	32	40 × 40 × 5
BG-04	450 × 450	500 × 445	25	30 × 30 × 5
BG-05	450 × 450	525 × 445	40	45 × 45 × 5
BG-06	600 × 600	650 × 595	25	30 × 30 × 5
BG-07	600 × 600	695 × 595	50	55 × 55 × 5
BG-08	750 × 750	845 × 745	50	55 × 55 × 5
BG-09	900 × 600	895 × 650	25	30 × 30 × 5
BG-10	900 × 600	895 × 695	50	55 × 55 × 5
BG-11	900 × 900	895 × 995	50	55 × 55 × 5
BG-12	900 × 900	895 × 980	75	85 × 75 × 6

At different applications and road conditions, we should adopts different steel grating trench cover for security and firmness. In the following chart, we introduce the load grade type and bearing load.

Table 15: Bearing Load Grade of Trench Cover

Item	Load Grade	Maximum Weight of Vehicle (kg)	Single Rear Wheel Load (kN)	Wheel Press Area (mm)
SGDD-01	T-25	25000	100	200 × 500
SGDD-02	T-20	20000	80	200 × 500
SGDD-03	T-14	14000	56	200 × 500
SGDD-04	T-6	6000	24	200 × 240
SGDD-05	T-2	2000	8	200 × 160

What services can we do for you?

Strict Inspections during Production and Before Delivery

With the development of enterprise system, we set up a series of steel grating inspections for quality control during production. Additional, we will re-inspect the products before delivery to ensure all the products are qualified and perfect in condition when our customers receive them. Inspection items are as follows:

- **Appearance inspection**

All the steel grating will be inspected one by one to ensure the smooth and integrated surface and appearance. If there are some defects, they will be selected and replaced by qualified products.

- **Sizing inspection**

No matter the sheet thickness, bearing bar size and cross bar size or the whole size of width, length and height, they will be inspected with meter rulers, vernier caliper, micrometer and other professional measurement tools. All the sizes must accord with the tolerance of International Standards and customers' requirements.

- **Performance inspection**

The steel grating will be sampling inspected about the load performance according to customers' requirements and International standards. And the test report will be delivered along with the steel bar goods.

- **Package inspection**

Steel grating is commonly packed in steel belt or it is packed in wooden or metal pallet. Quantity and weight of each package should be according to the particular situation and customers' requirements. All the package should be firm and rigid to withstand the high impact during transportation.

- **Label inspection**

Label will be attached on the products before delivery. The label will contain brands, company, specifications, quantity and standards. Other information will be customized according to customers' requirements.

- **Quality certification inspection**

Quality certification will be delivered along with the products. The certification will contain inspection results, including appearance and performance inspection. Additional, the mill certification of raw materials can be delivered at the same time according to customers' requirements.

STEEL BAR GRATING



Bear bar size inspection



Angle bar size inspection

Tips for choosing proper steel grating

- **Material**

Steel grating can be made of different materials including carbon steel, aluminum steel and stainless steel. The different materials have their own characteristics and they are applied to different applications.

- **Surface type**

We offer steel grating with smooth surface and serrated surface. Steel grating with serrated surface is widely used as walkways or outdoor stair treads for its perfect anti-slide effect.

- **Packaging method**

We can offer strap packaging, pallet packaging or screw rod fixation for your reference. Generally, we adopt the method of strap packaging combined with pallet packaging.

- **Specific application**

If you want to purchase the steel grating for special or specific uses, you can browse our specific product page. If you have any questions, please contact us on the line, and our related staff will provide you with free consultation service.

STEEL BAR GRATING

Walcoom Corporation



Add: No. 3481, Yongxing Road, Hengshui City, Hebei Province, China.
Tel: +86-15030811699
Skype: wiremesh@live.com
E-mail: sales@walcoom.com
Web: <http://www.walcoom.com>

